



***Performance Under Pressure***

PARTS LIST FOR  
***WP-3000-4MHB/RB***  
(SERIAL BREAK# 10380918)

ENGINE OIL GRADE:	
HONDA/ SUBARU:	SAE10W-30
ENGINE OIL CAPACITY:	20 oz.
PUMP OIL GRADE:	Mi-T-M Pump Oil AW-4085-0016
PUMP OIL CAPACITY:	16 oz.
NOZZLE SIZE:	3.0

This Parts Listing has been compiled for your benefit. You can be assured your Mi-T-M Cold Water Pressure Washer was constructed and designed with quality and performance in mind using over 25 years experience in the pressure washer business. Each component has been rigorously tested to insure the highest level of acceptance.

The contents of this Parts Listing are based on the latest product information available at the time of publication. Mi-T-M reserves the right to make changes in price, color, materials, equipment, specifications or models at any time without notice.

**WARNING**

THIS IS A HIGH PRESSURE, COLD WATER PRESSURE WASHER. CAUTION SHOULD BE OBSERVED WHEN USING OR REPAIRING THIS UNIT! READ AND FOLLOW THE SAFETY WARNINGS LISTED BELOW BEFORE ATTEMPTING ANY REPAIRS ON THIS PRESSURE WASHER!

**SAFETY WARNINGS**

- 1. NEVER alter or modify the equipment. Be sure any accessory items and system components being used will withstand the pressure developed. Use only genuine Mi-T-M parts for repair of your pressure washer. Failure to do so can cause hazardous operating conditions and will VOID warranty.
- 2. NEVER make adjustments on machinery while the unit is connected to the engine without first removing the ignition cable from the spark plug. Turning over the machinery by hand during adjustment or cleaning might start the engine and machinery with it, causing serious injury to the operator.
- 3. Know how to stop and bleed pressures quickly. Be thoroughly familiar with controls.
- 4. Before servicing the unit, turn unit off, relieve the water pressure and allow the unit to cool down. Do not make repairs while the unit is running. Service in a clean, dry, flat area. Be especially careful to properly dispose of any flammable materials.
- 5. After testing the machine, DO NOT leave the pressurized unit unattended. Shut off the unit and release trapped pressure before leaving.

**Table of Contents**

**SPECIFICATIONS.....3**

**FRAME ASSEMBLY (AFTER SERIAL #10380918).....4**

**PUMP ASSEMBLY (3-0297) .....6**

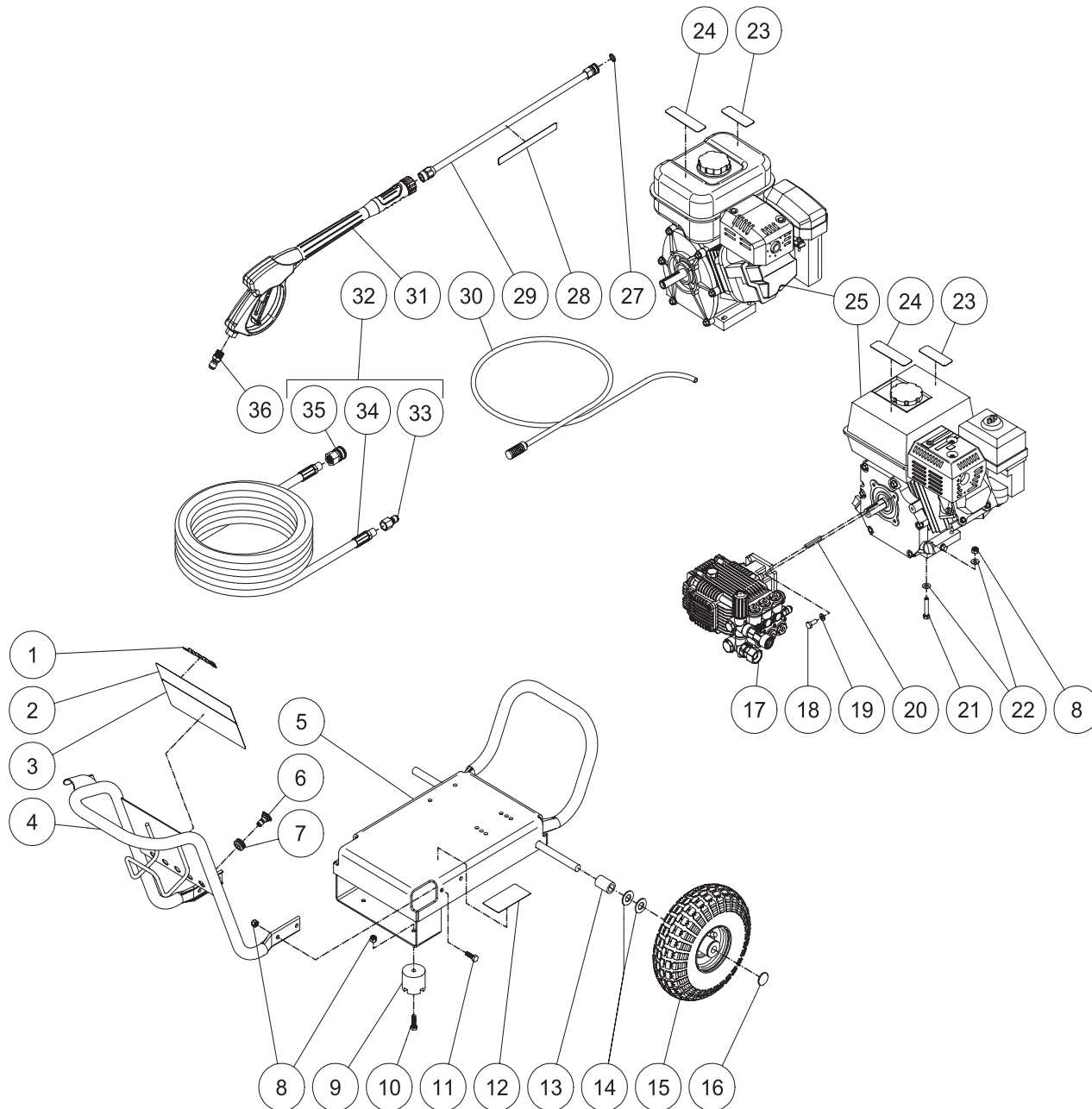
**UNLOADER (8-0593).....8**

**DETERGENT INJECTOR (70-0499).....10**

## SPECIFICATIONS

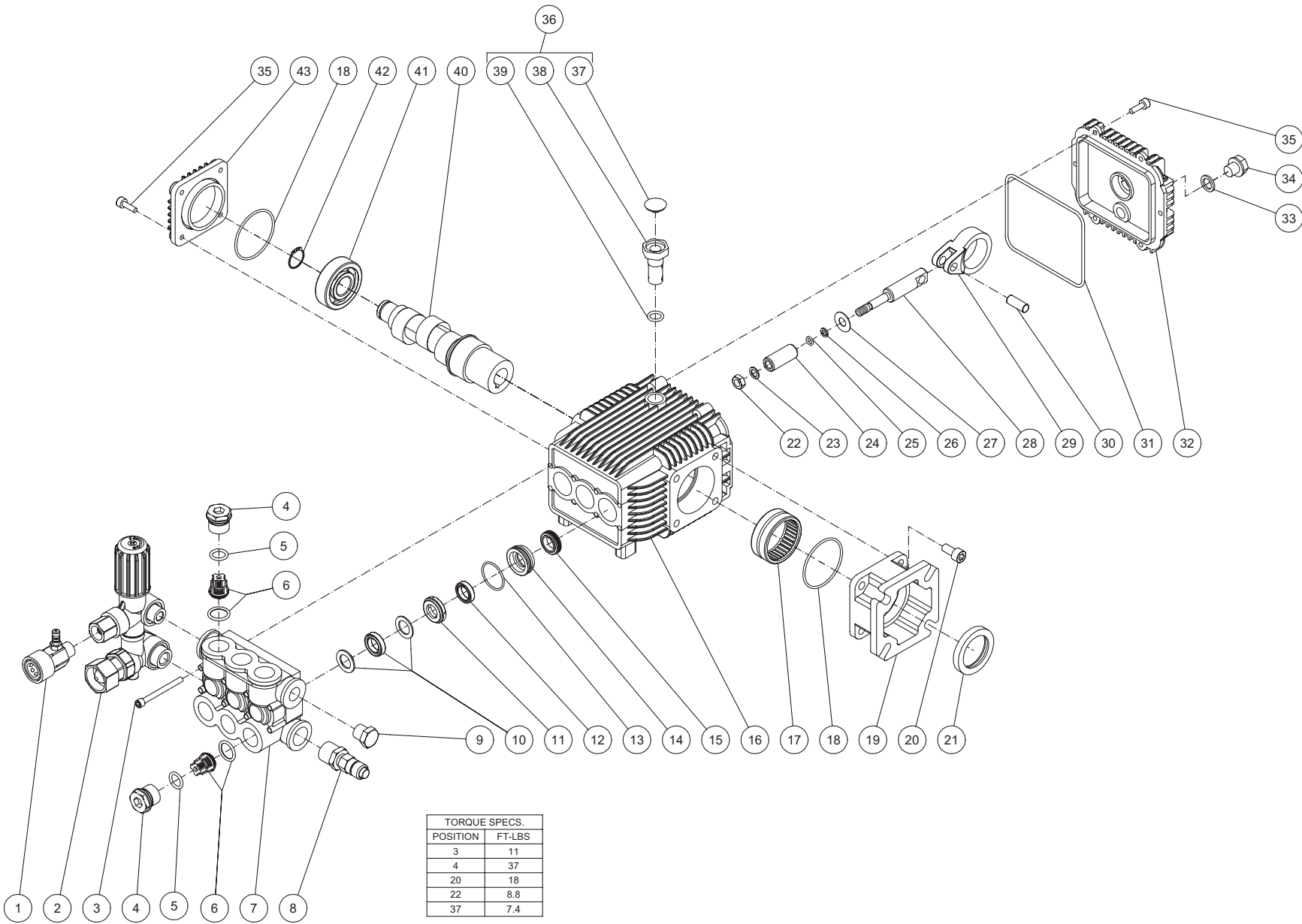
MODEL NUMBER	WP-3000-4MHB	WP-3000-4MRB
Operating Pressure (PSI/Bar):	3000/207	
High Pressure Nozzle:	3.0	
Water Volume (GPM/lpm):	2.4/9.1	
Engine:	Honda	Subaru
Horsepower	6.5	7.0
Engine Type	4 Stroke, Overhead Valve, Single Cylinder	4 Stroke, Overhead Cam, Single Cylinder
Oil Type	SAE10W-30	
Oil Capacity (oz./liters)	20/6	
Fuel Type	Unleaded Gasoline 86 Octane Minimum	
Low Oil Protection	Oil Alert™	Oil Sensor
Fuel Capacity (gallon/ liters)	.95/3.6	
Starting	Recoil	
Maximum No Load RPM	3600 (+/- 100) RPM	
Pump:	Direct Driven, Oil Bath, Triplex Piston	
Oil Type	Mi-T-M Pump Oil AW-4085-0016	
Oil Capacity (oz./liters)	16/47	
Plungers	Ceramic	
Manifold	Forged Brass	
Valves	Stainless Steel	
Unloader	Adjustable	
Heat Dump Valve	Relieves heated water during unloader bypass stage	
Detergent Injector	Low pressure down stream from pump	
Unit Net Weight (lbs/Kg)	85/38.6	
Unit Shipping Weight (lbs/Kg)	110/49.9	
Unit Net Dimension (in/cm)	37Lx21Wx24.5H/94Lx53.4Wx62.3H	
Unit Shipping Dimension (in/cm)	30.5Lx21.5Wx28.5H/77.5Lx54.6Wx72.4H	

# FRAME ASSEMBLY (AFTER SERIAL #10380918)



FRAME ASSEMBLY FOR WP-3000-4MHB_RB								
REF. #	DESCRIPTION	PART #	QTY.		REF. #	DESCRIPTION	PART #	QTY.
1	Decal- Die Cut 3000	34-0775	1		19	Lockwasher	29-0007	4
2	Decal- Work Pro Placard	34-0737	1		20	Key	43-0073	1
3	Decal- Warning/Caution/Operation (See 34-9014)	N/A Sep.	1		21	Bolt	27-0070	4
4	Front Handle Assy	7-0194A01	1		22	Washer	28-0003	8
5	Small JP Frame	5-0253A53	1		23	Decal- Caution: Risk of Fire(See 34-9014)	N/A Sep.	1
6	Nozzle- 1503	18-0150	1		24	Decal- Warning: Muffler Hot (See 34-9014)	N/A Sep.	1
-	Nozzle- 2503	18-0303	1		25	Engine- 6.5 H.P. Honda	1-0088	1
-	Nozzle- 6540	18-0148	1		26	Engine- 7.0 H.P. Subaru	1-0133	1
7	Grommet	33-0001	5		27	O-ring (Replacement Only)	25-0122	-
8	Locknut	30-0157	10		28	Decal- Warning: Risk of Injection (See 34-9014)	N/A Sep.	1
9	Isolator	14-0008	2		29	Lance Assembly	16-0366	1
10	Bolt	27-0068	2		30	Detergent Strainer	19-0233	1
11	Bolt	27-0067	4		31	Gun/Wand Assembly	16-0441	1
12	Decal- Data Plate	N/A	1		32	Pressure Hose	15-0277	1
13	Axle Spacer	62-0176	2		33	Quick Connect	17-0006	1
14	Washer	28-0008	4		34	Hose	N/A	1
15	Wheel	14-0113	2		35	Quick Connect	17-0004	1
16	Hubcap	33-0018	2		36	Quick Connect	17-0005	1
17	Pump	3-0297	1		Safety Decal Kit (Inc. 3, 23-24. 28)	34-9014		
18	Bolt	27-0846	4	*Must Order in One Foot Lengths				

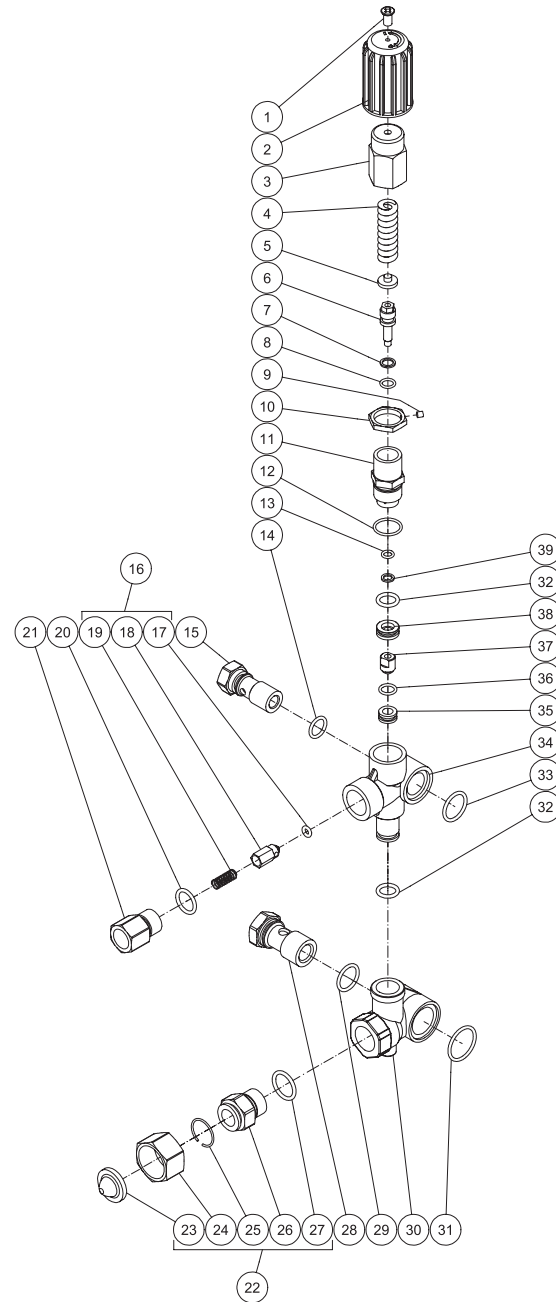
PUMP ASSEMBLY (3-0297)



3-0297-072209-CH

3-0297 072209-CH							
PUMP 3-0297							
ITEM	DESCRIPTION	PART #	QTY		ITEM	DESCRIPTION	PART # QTY
1	OUTLET CONNECTOR	70-0499	1		24	PLUNGER CERAMIC	46-1315 3
2	UNLOADER ASSEMBLY	8-0593	1		25	O-RING	25-0163 3
3	BOLT	27-9598	8		26	BACKUP RING	26-0321 3
4	VALVE PLUG	39-0231	6		27	SLINGER WASHER	46-1316 3
5	O-RING	25-0622	6		28	PLUNGER GUIDE	N/A 3
6	VALVE ASSEMBLY *(SEE 70-0502)	N/A	6		29	CONNECTING ROD	N/A 3
7	MANIFOLD HEAD	N/A	1		30	PISTON	N/A 3
8	THERMAL RELIEF VALVE	22-0005	1		31	O-RING	25-0604 1
9	OUTLET PLUG	39-0203	1		32	CRANKCASE COVER	46-1317 1
10	HIGH PRESSURE PACKING	N/A	3		33	GASKET	26-0322 1
11	SEAL COMPACTION RING	46-1311	3		34	DRAIN PLUG	39-0232 1
12	LOW PRESSURE SEAL	N/A	3		35	BOLT	27-8401 10
13	O-RING	N/A	3		36	DIPSTICK	70-0503 1
14	RETAINER RING	46-1312	3		37	OIL PLUG COVER	N/A 1
15	OIL SEAL	46-1313	3		38	OIL PLUG	N/A 1
16	CRANKCASE	N/A	1		39	O-RING	N/A 1
17	NEEDLE BEARING	N/A	1		40	CRANKSHAFT	N/A 1
18	O-RING	25-0603	2		41	BALL BEARING	48-0063 1
19	FLANGE	46-1314	1		42	SNAP RING	N/A 1
20	BOLT	27-8431	4		43	CRANKSHAFT COVER	N/A 1
21	OIL SEAL	26-0320	1			VALVES KIT (INC. 6 OF 6)	70-0502 1
22	NUT	30-6016	3			"PACKING KIT (INC. 3 OF 10, 12, 13)"	70-0501 1
23	PLAIN WASHER	28-0065	3				

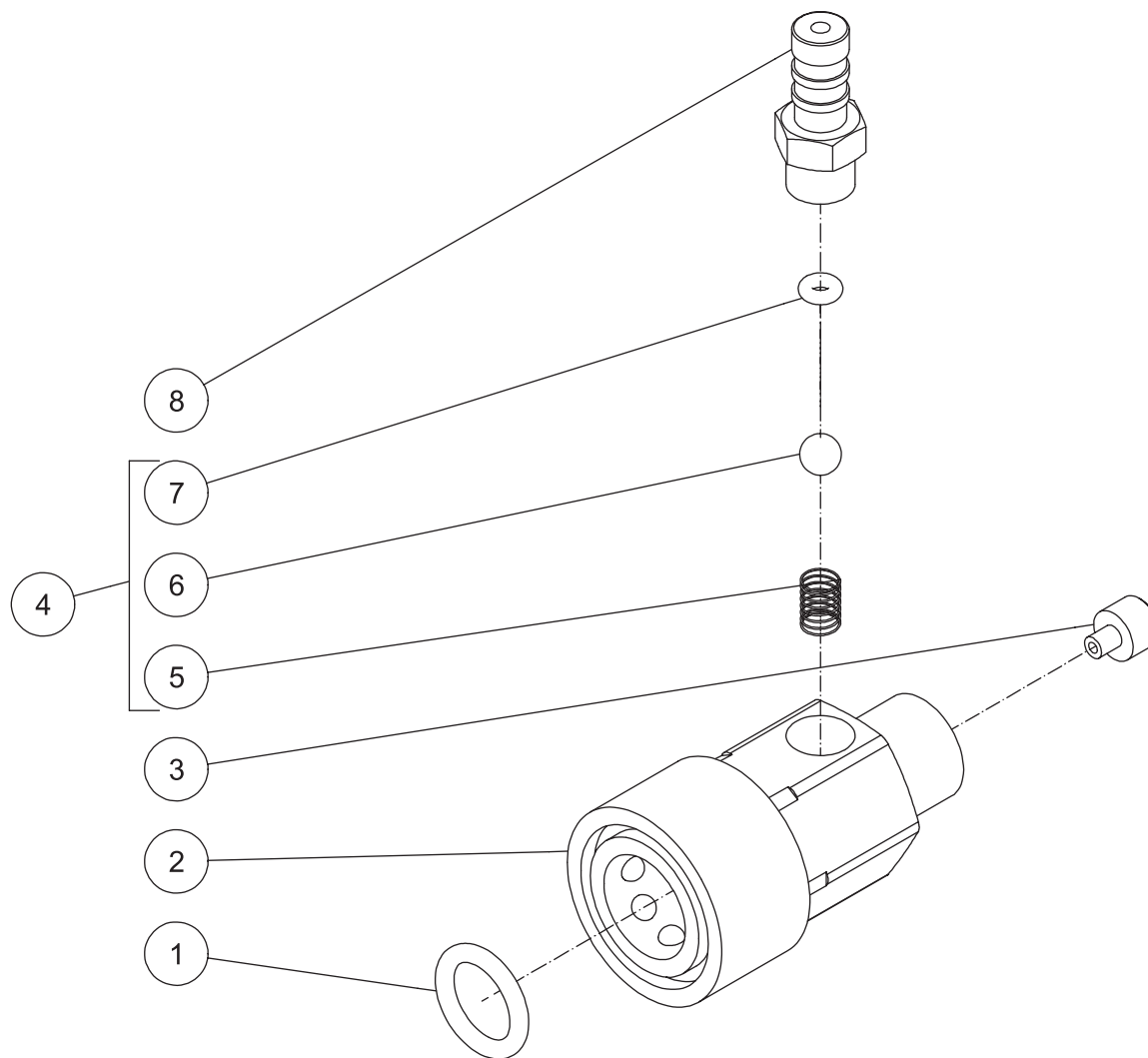
# UNLOADER (8-0593)





UNLOADER (8-0593)							
ITEM	DESCRIPTION	PART #	QTY		ITEM	DESCRIPTION	PART # QTY
1	SCREW	N/A	1		21	OUTLET CONNECTOR	46-1389 1
2	PLASTIC KNOB	N/A	1		22	GARDEN HOSE INLET ASSY (INC. 23-27)	23-0095 1
3	KNOB	N/A	1		23	FILTER	N/A 1
4	SPRING	N/A	1		24	SWIVEL NUT	N/A 1
5	SPRING SEAT	N/A	1		25	RETAINING RING	N/A 1
6	VALVE ROD	N/A	1		26	INLET CONNECTOR	N/A 1
7	SUPPORT RING	N/A	1		27	O-RING	N/A 1
8	O-RING	N/A	1		28	INLET BANJO BOLT	8-0595 1
9	SET SCREW	N/A	1		29	O-RING	25-0602 1
10	JAM NUT	N/A	1		30	BY PASS HOUSING	N/A 1
11	UNLOADER VALVE BODY	N/A	1		31	O-RING	N/A 1
12	O-RING	N/A	1		32	O-RING	N/A 2
13	O-RING	25-0163	1		33	O-RING	N/A 1
14	O-RING	25-0169	1		34	VALVE HOUSING	N/A 1
15	OUTLET BANJO BOLT	8-0594	1		35	VALVE SEAT	N/A 1
16	KIT - NON-RETURN VALVE (INC. 17-19)	70-0500	1		36	O-RING	N/A 1
17	O-RING	N/A	1		37	BULLET	N/A 1
18	CHECKING VALVE	N/A	1		38	BY PASS JET UNLOADER	N/A 1
19	SPRING	N/A	1		39	SUPPORT RING	N/A 1
20	O-RING	25-0386	1				

## DETERGENT INJECTOR (70-0499)



70-0499 120607-JJT

DETERGENT INJECTOR (70-0499)			
REF. #	DESCRIPTION	PART #	QTY.
1	O-Ring	25-0123	1
2	Quick Connect	N/A	1
3	Water Injection Tube	N/A	1
4	Injector Repair Kit	70-0293	1
5	Spring	N/A	1
6	Ball	N/A	1
7	O-Ring	N/A	1
8	Soap Suction Nozzle	46-0869	1

Manufactured by Mi-T-M  
8650 Enterprise Drive, Peosta IA 52068  
563-556-7484/ Fax 563-556-1235